

SILICON VALLEY COMPUTER, INC.

ADP50-3, GOLD CARD40-T8

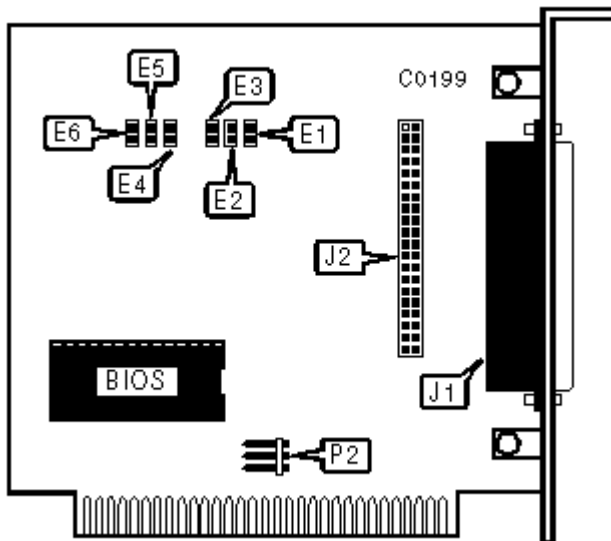


Data bus: 8-bit, ISA

Size: Half-length, full-height card

Hard drives supported: Two IDE (XT/AT) Interface drives

Floppy drives supported: Two 360KB or 720KB drives (external only)



CONNECTIONS	
Function	Location
DB-37 control cable connector-floppy drive	J1
40-pin IDE (XT/AT) Interface connector	J2
5-pin connector-DC power	P2

BIOS ADDRESS				
Select		E1	E2	E3
	Disabled	open	open	open
»	C800h	open	open	closed
	CA00h	open	closed	closed
	CC00h	closed	open	closed
	CE00h	closed	closed	closed
INTERRUPT REQUEST				
Function		E4	E5	E6
»	Disabled	open	open	open
	IRQ5	closed	open	closed
	IRQ2	closed	closed	open
MISCELLANEOUS TECHNICAL NOTES				
<p>This controller has a built-in low level format program. To enter the program run the DEBUG utility supplied with DOS and at the prompt enter: G=C800:6.</p>				